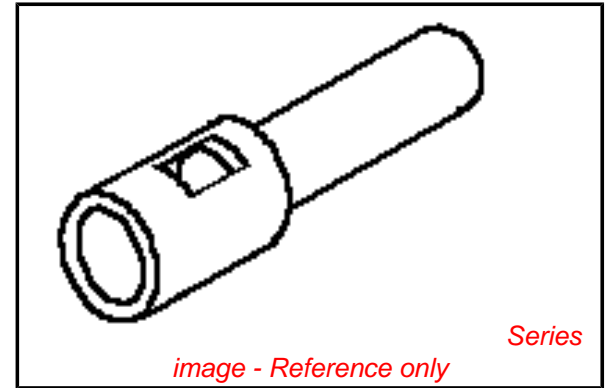


PLEASE CHECK WWW.MOLEX.COM FOR LATEST PART INFORMATION

Part Number: [0003092011](#)
Status: **Active**
Overview: [standard_093](#)
Description: 2.36mm (.093") Diameter Standard .093 Pin and Socket Plug Housing, 1 Circuit, Friction Lock

Documents:

3D Model	Product Specification PS-42477 (PDF)
Drawing (PDF)	Product Specification PS-43660-9999 (PDF)
Packaging Specification (PDF)	RoHS Certificate of Compliance (PDF)
Product Specification PS-02-09 (PDF)	



Agency Certification

CSA	LR19980
TUV	R9351032
UL	E29179

General

Product Family	Crimp Housings
Series	1619
Comments	17.0A max. can be achieved when housing is used with 42477 or 42478 terminals
MolexKits	Yes
Overview	standard_093
Product Name	Standard .093"

Physical

Circuits (maximum)	1
Color - Resin	Natural
Flammability	94V-2
Gender	Dual
Glow-Wire Compliant	No
Material - Resin	Nylon
Number of Rows	1
Packaging Type	Bag
Panel Mount	No
Pitch - Mating Interface (in)	0.198 In
Pitch - Mating Interface (mm)	5.03 mm
Stackable	No
Temperature Range - Operating	-40°C to +105°C

Electrical

Current - Maximum per Contact	14A
-------------------------------	-----

Material Info

Old Part Number	1619-1P1A5M1A
-----------------	---------------

Reference - Drawing Numbers

Packaging Specification	PK-1619-001
Product Specification	PS-02-09, PS-42477, PS-43660-9999
Sales Drawing	SD-1619-1P*

EU RoHS

ELV and RoHS Compliant
REACH SVHC
Contains SVHC: No
Halogen-Free
Status

China RoHS



Need more information on product environmental compliance?

Email productcompliance@molex.com
 For a multiple part number RoHS Certificate of Compliance, [click here](#)

Please visit the [Contact Us](#) section for any non-product compliance questions.

Search Parts in this Series

[1619Series](#)

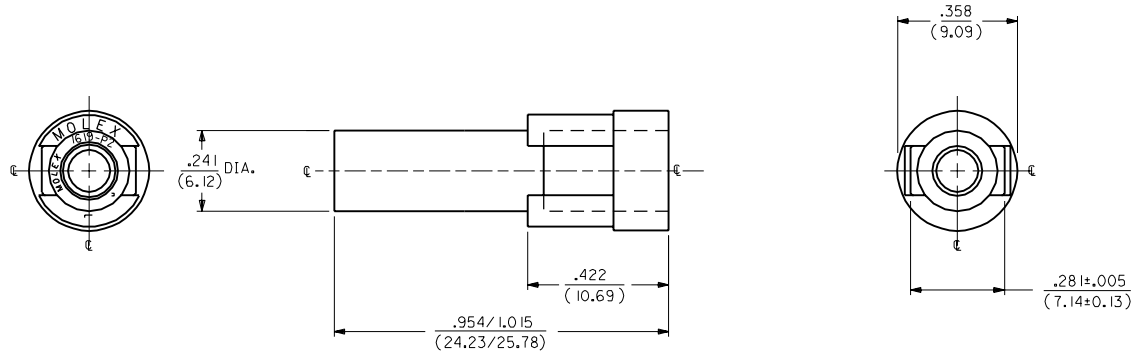
Mates With

[1619r](#)

Use With

[1189](#) Crimp Terminals, [1190](#) Crimp Terminals, [1376](#) Male PC Tail Terminals, [1377](#) Female PC Tail Terminals, [1380](#) Male Crimp Terminals, [1381](#) Female Crimp Terminals, [1433](#) Crimp Terminals, [1434](#) Male Crimp Terminals, [1973](#) , [2151](#) , [2273](#) , [2870](#) , [2871](#) , [4272](#) , [4550](#) , [6271](#) , [6310](#) , [42477](#) , [42478](#)

ORDER NO.	ENG. NO.	OLD ENG. NO.
03-09-2011	1619-IP1A5M1A	1619-P
03-09-7011	1619-IP1A5M1B	1619-P-D
03-09-7012	1619-IP1A5M1G	-----
03-09-7013	1619-IP1A5M1H	-----



ENGINEERING NUMBER SYSTEM

1619-IP1A5M1*

NOTES:

1. THIS HOUSING IS FOR USE WITH THE .093/(2.36) DIA. TERMINALS.
2. PRODUCT SPEC. 02-09 APPLIES.
3. MATERIAL: NYLON 66, 94V-2

- COLOR
- A) NATURAL F) GRAY
 - B) BLACK G) RED
 - C) AMBER H) BLUE
 - D) BROWN J) GREEN
 - E) ORANGE K) YELLOW

3	W2		
2	W2		
1	W2	W2	REDRAWN ON CAD ECN: U81151 WANG 37-11-12
MM#	SH.	REV.	LTR.
			REVISIONS

DIMENSIONS SHOWN METRIC (INCH) UNLESS OTHERWISE SPECIFIED TOLERANCES: ANGULAR ± 1/2°

	INCH	METRIC
3 PLACE	± .010	---
2 PLACE	± .014	± 0.25
1 PLACE	---	± 0.35

DRAFT WHERE APPLICABLE MUST REMAIN WITHIN DIMENSIONS

TITLE: HOUSING, PLUG .093/(2.36) DIAMETER

MOLEX INCORPORATED LITTLE ROCK, AR 72202 U.S.A.

FILE NAME: SP1619X1.DWG

DRG. NO.: SD-1619-IP*

DATE: 11/12/97

SHEET NO.: 1 OF 1

APP'D. BY: RE

SCALE: 4 : 1

SIZE: CP C